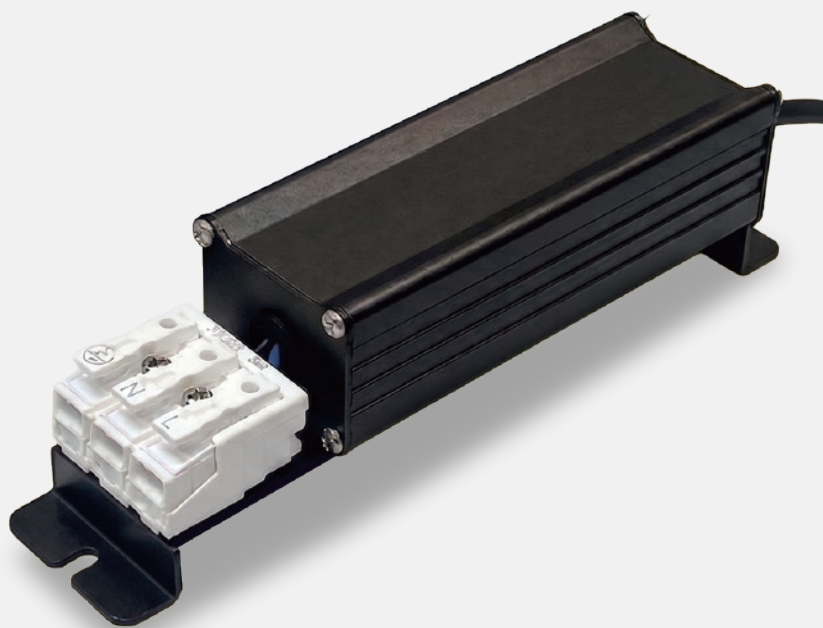


Phase-Cut Dimmable LED DRIVER 15W/25W

MAJOR FEATURES

- Built-in active PFC function.
- Phase-cut dimmable (LE & TE).
- Protections: OVP / SCP / OTP / Open Circuit.
- Safety Approved: PSE Certified.



KEY SPECIFICATION

MODEL	P-L015305HL-01T	P-L025505HL-01T
Rated Power	15W	25W
AC Input Voltage	100~120Vac	
Input Current (Max.)	0.2A	0.35A
Power Factor	> 0.9 (Full Load)	
Efficiency	> 80% (Full Load)	
Output Voltage	DC 30V (12~30V)	DC 50V (20~50V)
Output Current	500 mA	
Current Ripple	≤ ±5% (Full Load)	
Lifetime	50,000 Hours @ 40°C	
Working Temperature(°C)	-20°C ~ +50°C	
Dimensions (L x W x H)	143.5 × 35 × 39mm	